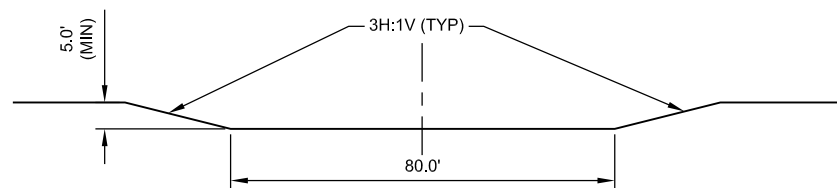
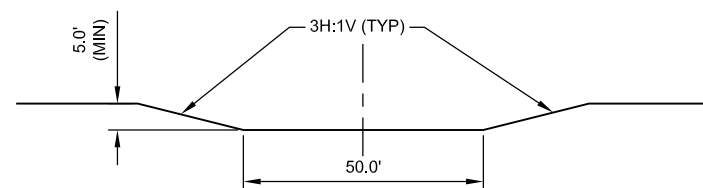


**PLAN**



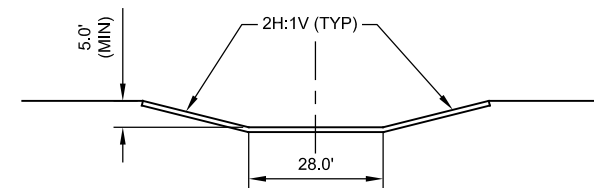
**TYPICAL GRASS-LINED CHANNEL**

STA 4+40 TO STA 5+40  
STA 22+00 TO STA 26+00  
NOT TO SCALE



**TYPICAL GRASS-LINED CHANNEL**

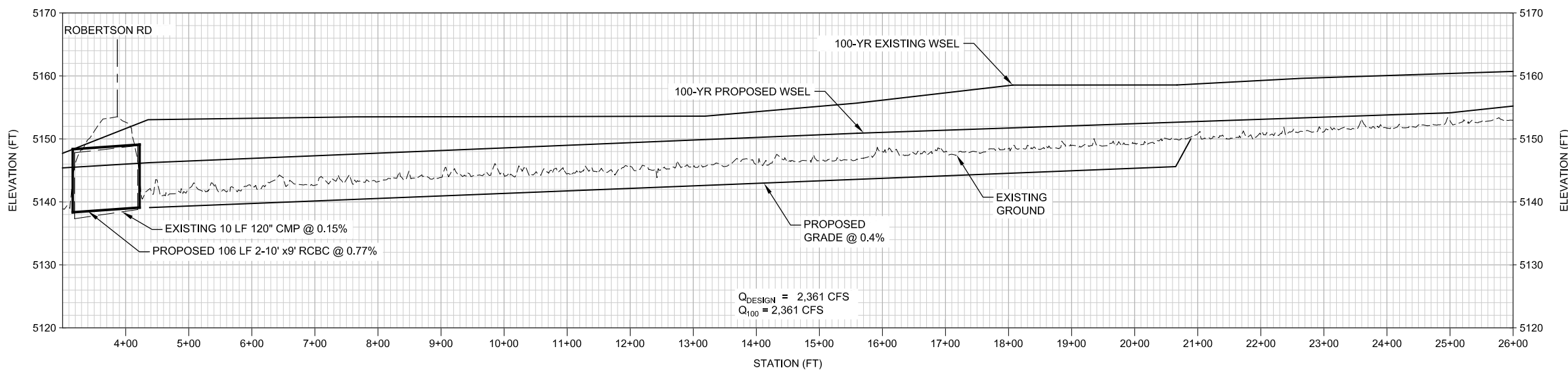
STA 6+50 TO STA 8+30  
STA 19+80 TO STA 21+50  
NOT TO SCALE



**TYPICAL CONCRETE-LINED CHANNEL**

STA 9+20 TO STA 19+80  
NOT TO SCALE

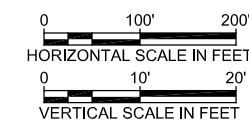
NOTE:  
CHANNEL SECTIONS TRANSITION BETWEEN GIVEN TYPICAL SECTIONS.



**PROFILE**

**Legend**

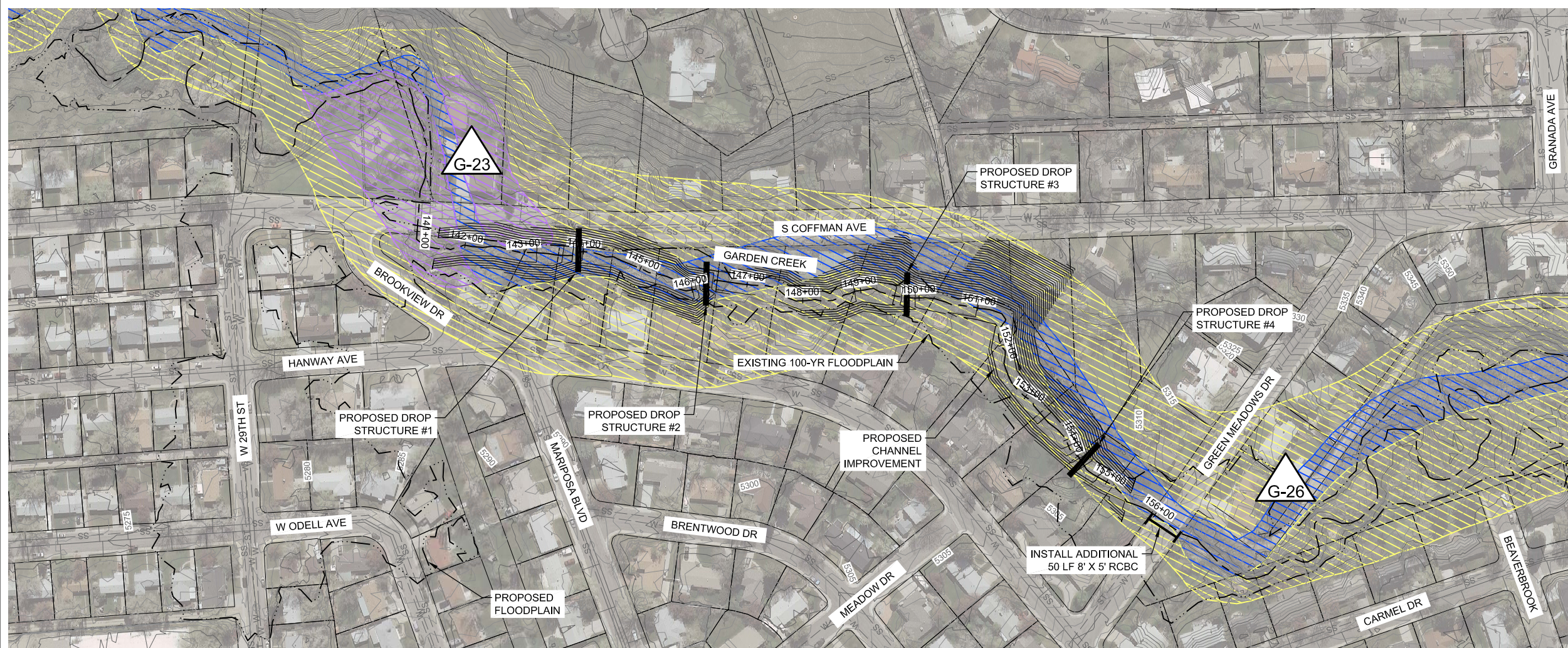
- City Limits
  - Design Point
  - Sanitary Sewers
  - Water
  - Existing Storm Sewer
  - Existing Parcel
  - Existing Storm Manhole
  - Existing Storm Inlet
  - Proposed Storm Sewer
  - Proposed Storm Manhole
  - Existing Contours
  - Proposed Contours
- FIS Flood Zone
- A, AE, AO
  - 0.2 Percent
  - AE, Floodway



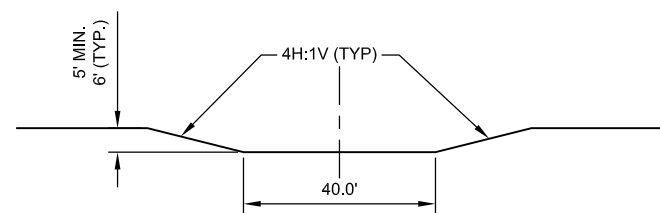
CASPER SWMP PROJECT  
CASPER, WYOMING

**EMIGRANT GAP  
PROPOSED  
IMPROVEMENTS**

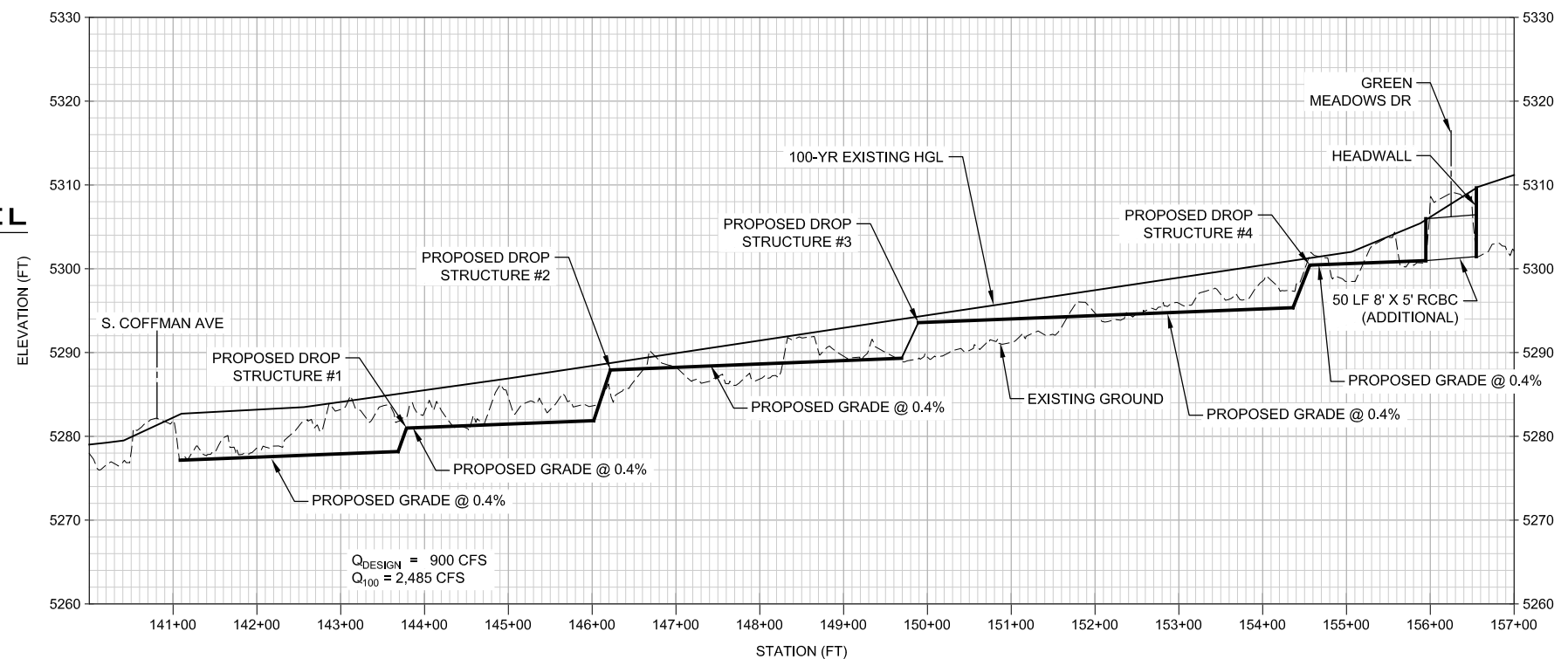




**PLAN**

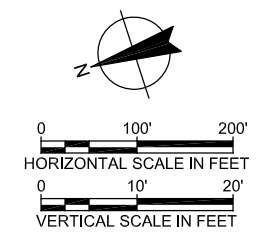


**TYPICAL GRASS-LINED CHANNEL**  
NOT TO SCALE



**PROFILE**

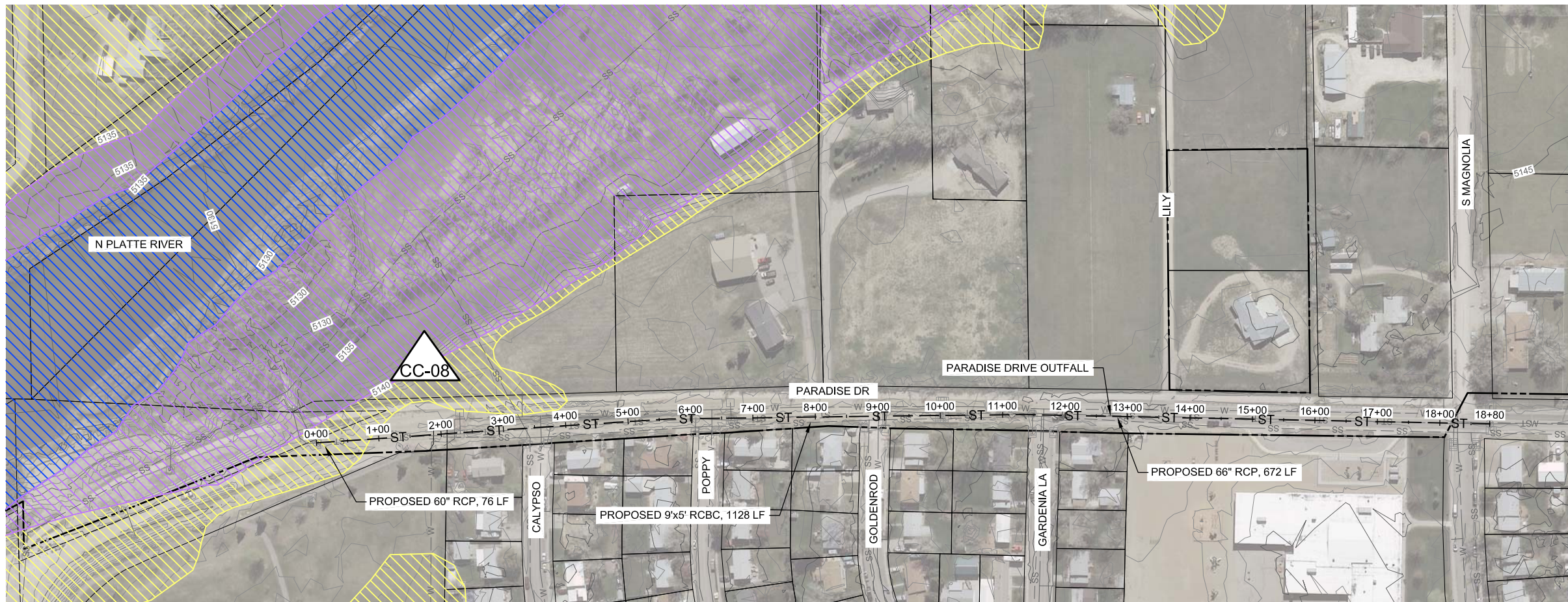
- Legend**
- City Limits
  - Design Point C-09
  - Sanitary Sewers
  - Water
  - Existing Storm Sewer
  - Existing Parcel
  - Existing Storm Manhole
  - Existing Storm Inlet
  - Proposed Storm Sewer
  - Proposed Storm Manhole
  - Existing Contours
  - Proposed Contours
- FIS Flood Zone**
- A, AE, AO
  - 0.2 Percent
  - AE, Floodway



**CASPER SWMMP PROJECT**  
**CASPER, WYOMING**

**GARDEN CREEK**  
**PROPOSED**  
**IMPROVEMENTS**





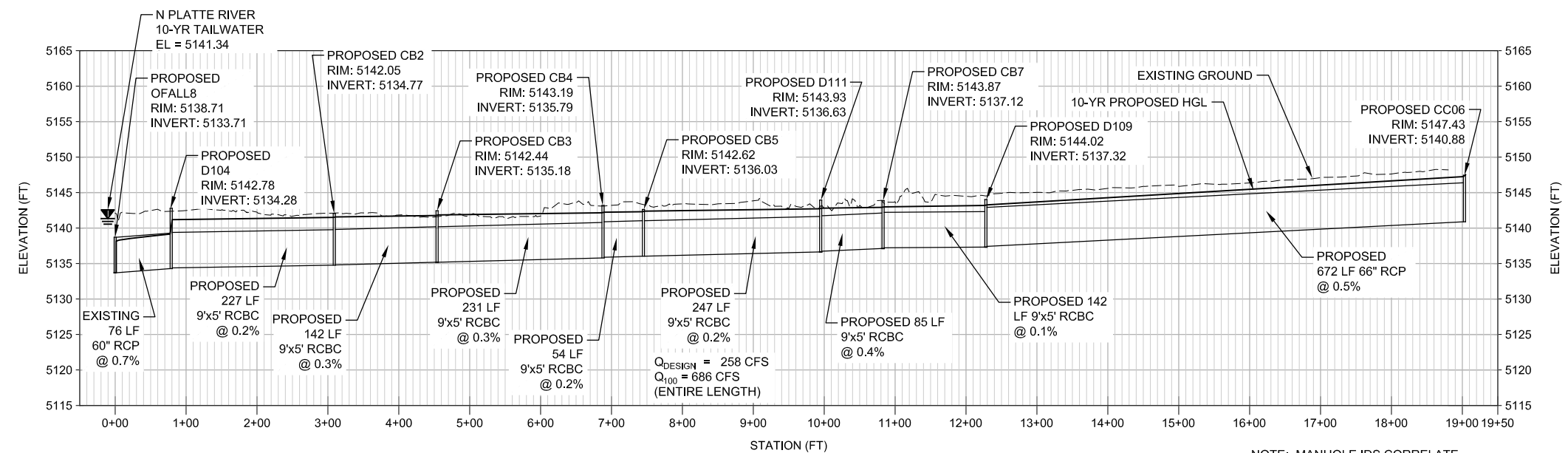
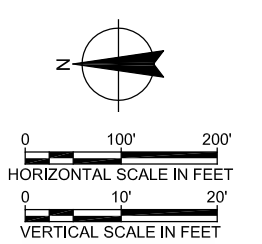
**PLAN**

**Legend**

- City Limits
- Design Point C-09
- Sanitary Sewers
- Water
- Existing Storm Sewer
- Existing Parcel
- Existing Storm Manhole
- Existing Storm Inlet
- Proposed Storm Sewer
- Proposed Storm Manhole
- Existing Contours
- Proposed Contours

**FIS Flood Zone**

- A, AE, AO
- 0.2 Percent
- AE, Floodway



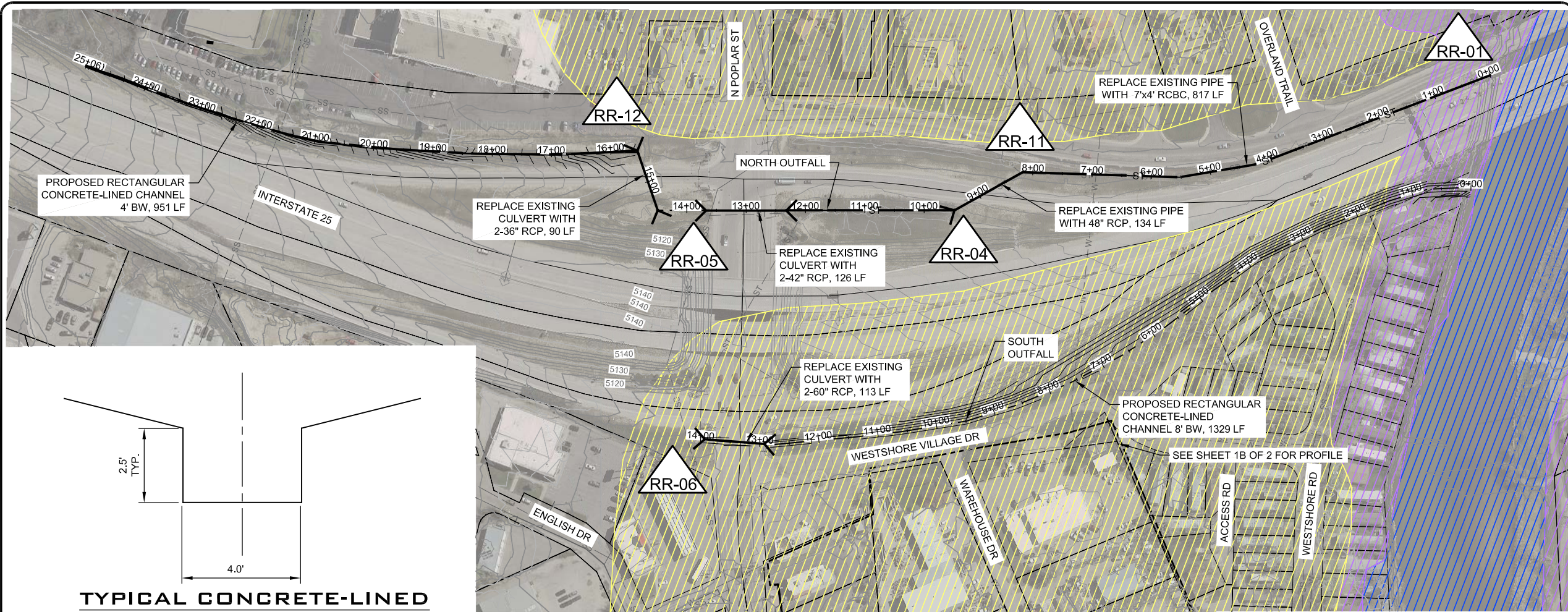
NOTE: MANHOLE IDS CORRELATE WITH STORMCAD ANALYSIS.

**PROFILE - PARADISE DRIVE OUTFALL**

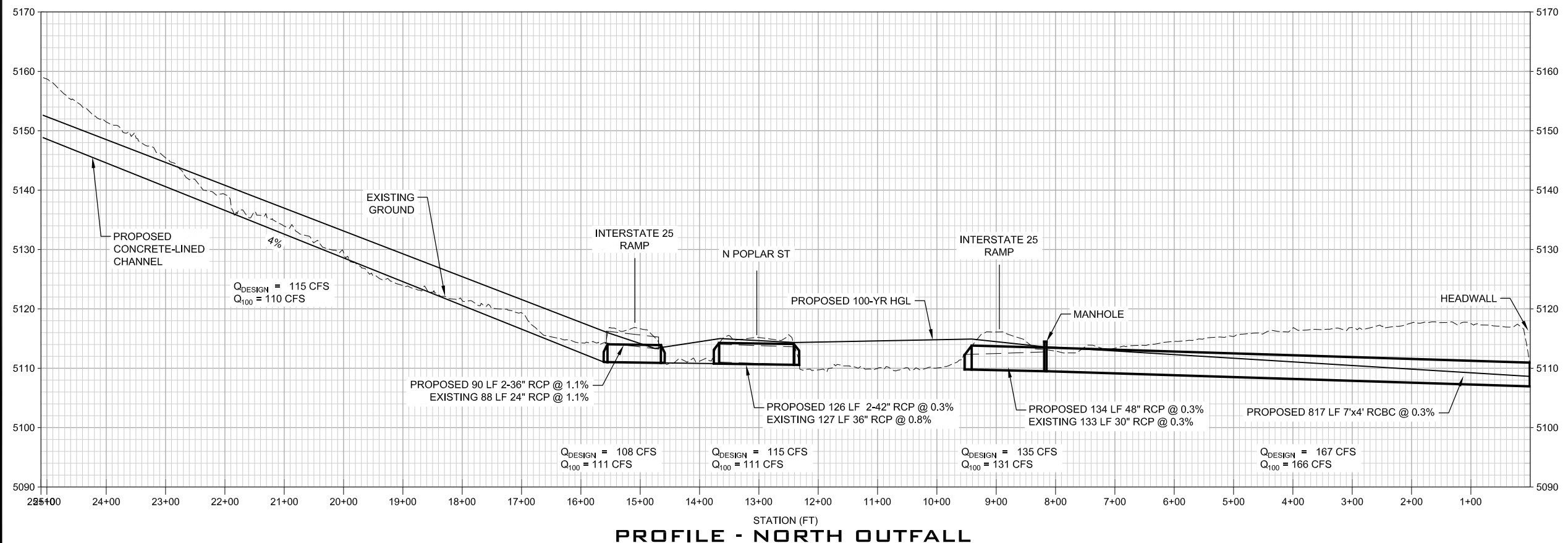
CASPER SWMMP PROJECT  
CASPER, WYOMING

**PARADISE VALLEY  
PROPOSED  
IMPROVEMENTS**





PLAN



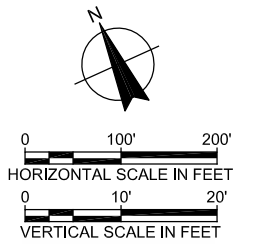
PROFILE - NORTH OUTFALL

**Legend**

- City Limits
- Design Point
- C-09
- Sanitary Sewers
- Water
- Existing Storm Sewer
- Existing Parcel
- Existing Storm Manhole
- Existing Storm Inlet
- Proposed Storm Sewer
- Proposed Storm Manhole
- Existing Contours
- Proposed Contours

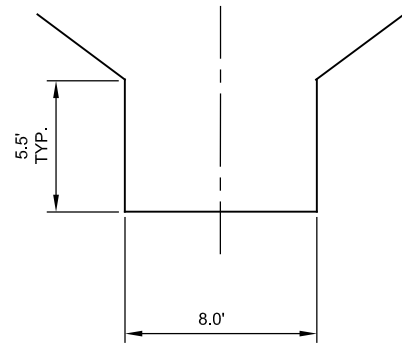
**FIS Flood Zone**

- A, AE, AO
- 0.2 Percent
- AE, Floodway



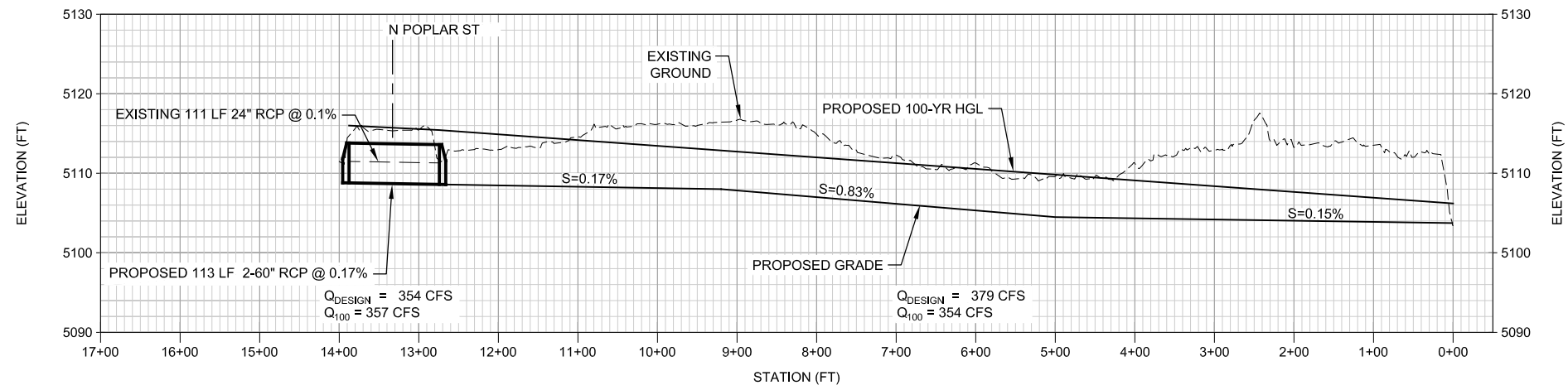
CASPER SWMMP PROJECT  
CASPER, WYOMING  
**POPLAR STREET  
STORM SYSTEM  
PROPOSED  
IMPROVEMENTS**





**TYPICAL CHANNEL SECTION**

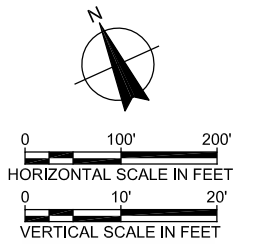
SOUTH CHANNEL STA 0+00 TO 12+80  
N.T.S.



**PROFILE-SOUTH OUTFALL**

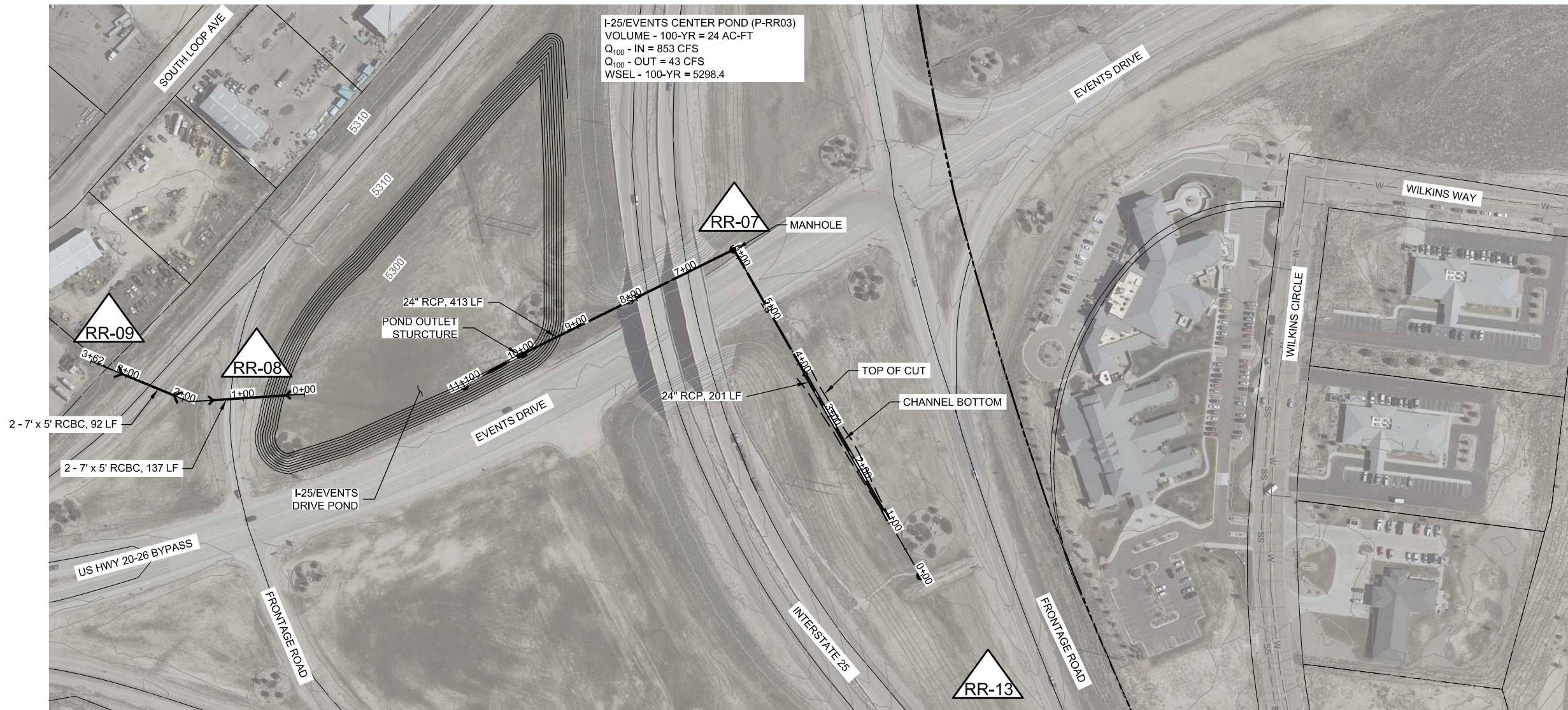
**Legend**

- City Limits
  - Design Point  
C-09
  - Sanitary Sewers
  - Water
  - Existing Storm Sewer
  - Existing Parcel
  - Existing Storm Manhole
  - Existing Storm Inlet
  - Proposed Storm Sewer
  - Proposed Storm Manhole
  - Existing Contours
  - Proposed Contours
- FIS Flood Zone
- A, AE, AO
  - 0.2 Percent
  - AE, Floodway

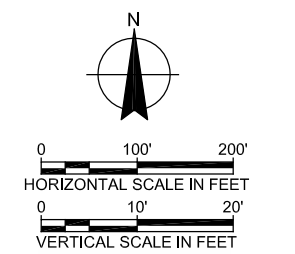
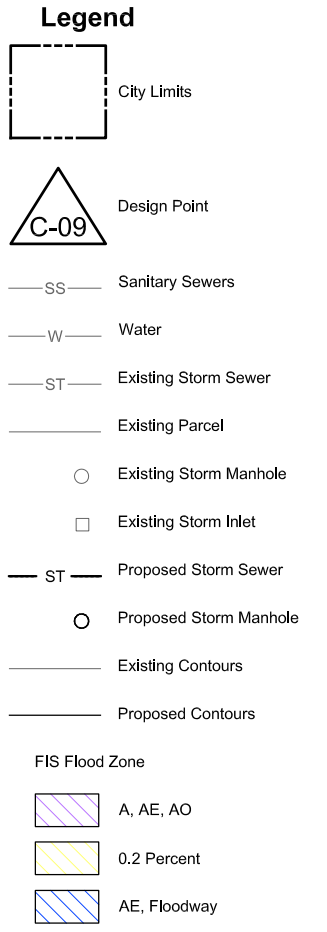


CASPER SWMP PROJECT  
CASPER, WYOMING  
**POPLAR STREET  
STORM SYSTEM  
PROPOSED  
IMPROVEMENTS**

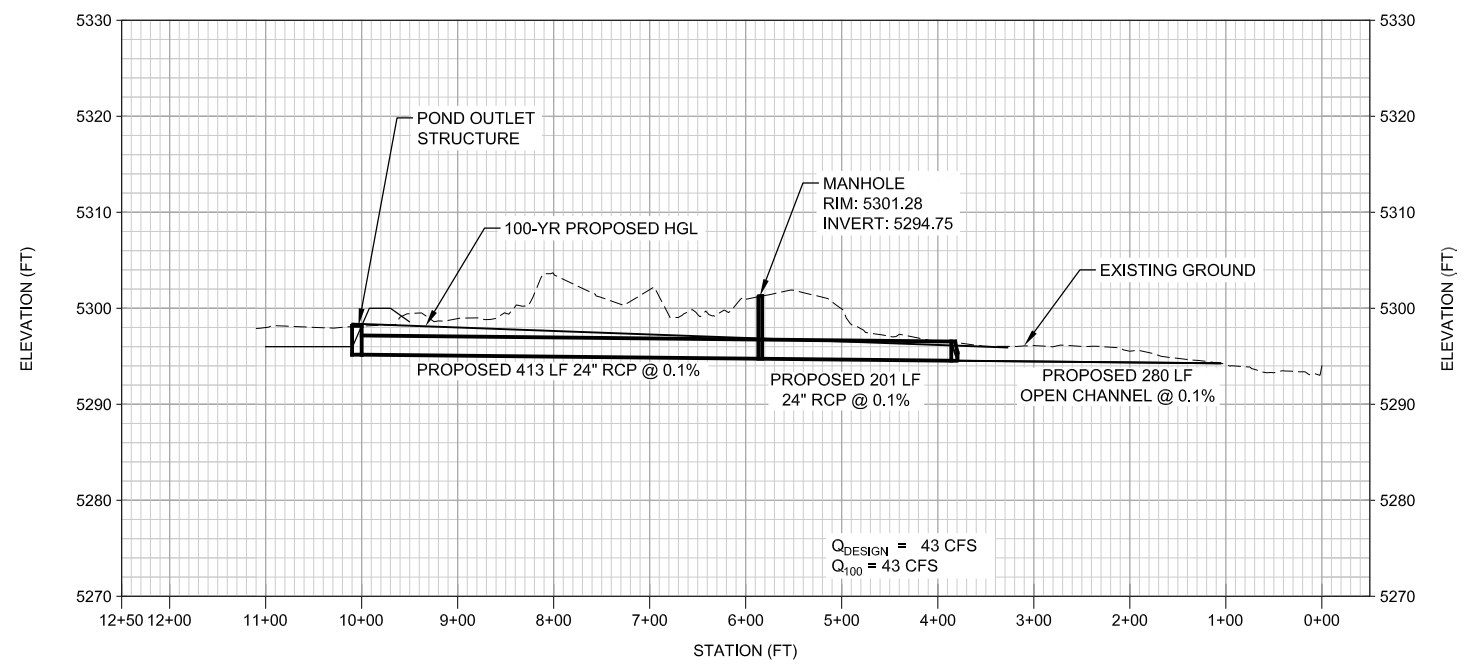
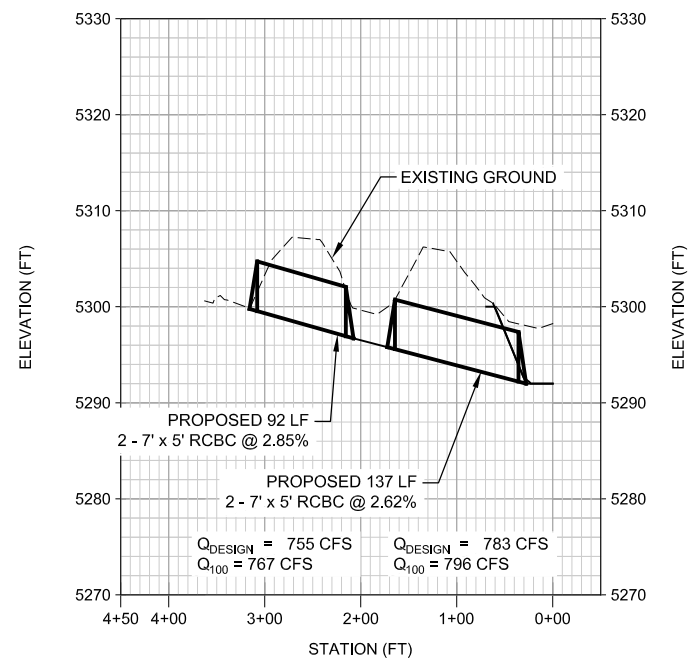




**PLAN**

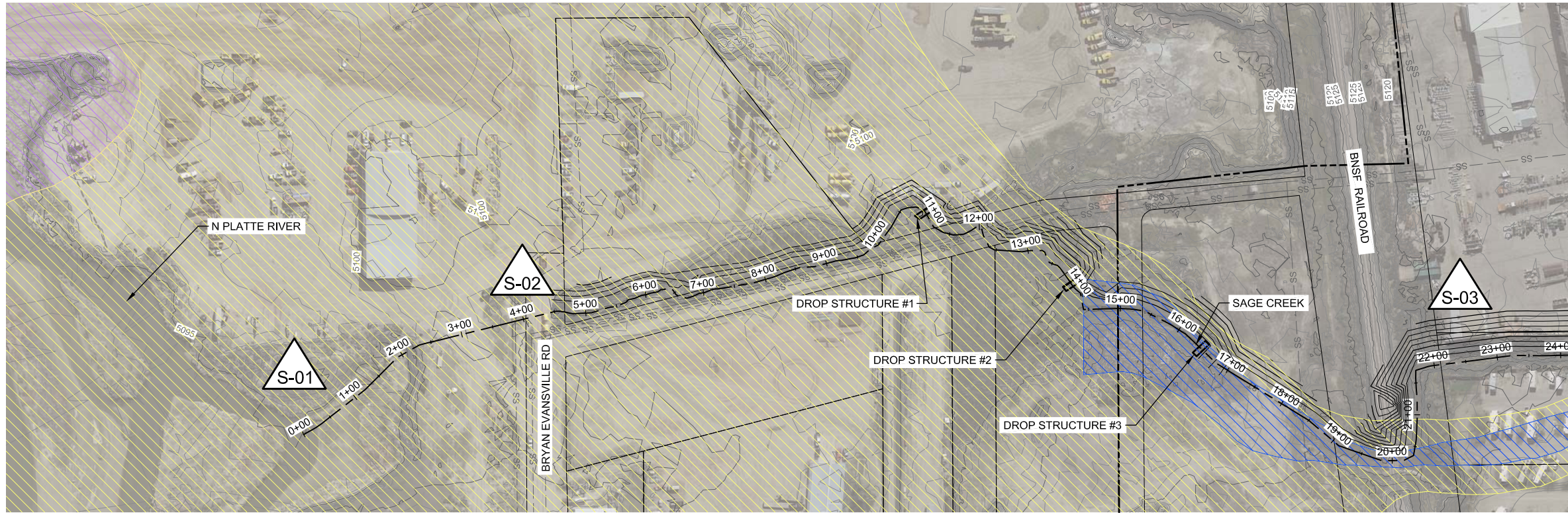


**CASPER SWMMP PROJECT**  
**CASPER, WYOMING**  
**POPLAR STREET**  
**STORM SYSTEM**  
**PROPOSED**  
**IMPROVEMENTS**



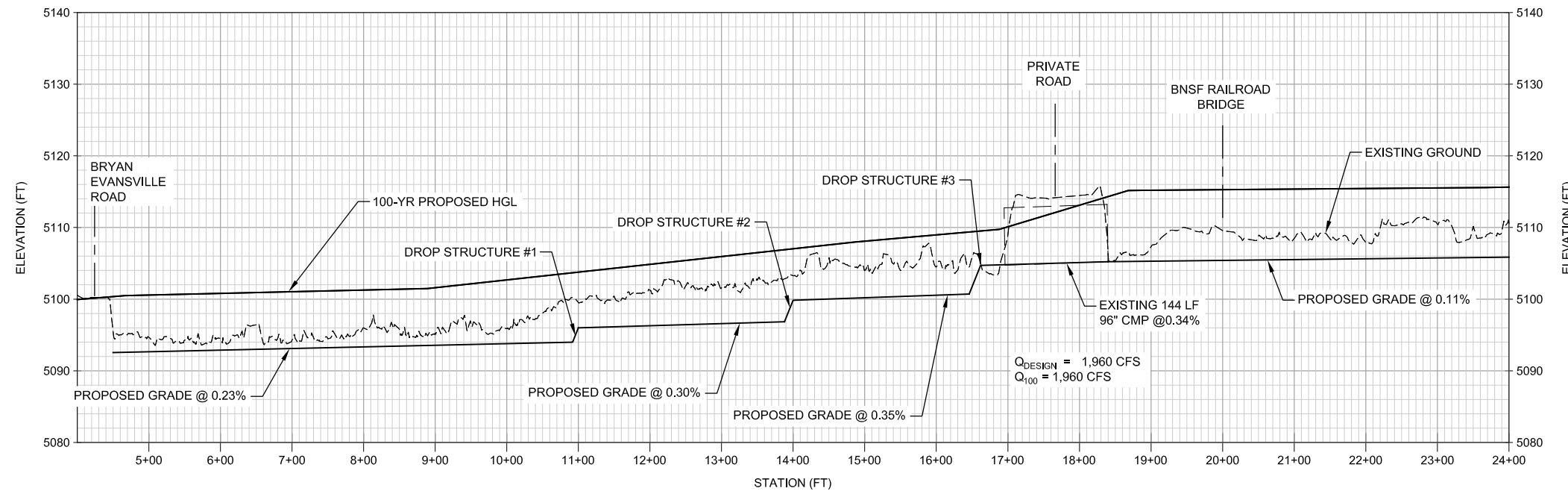
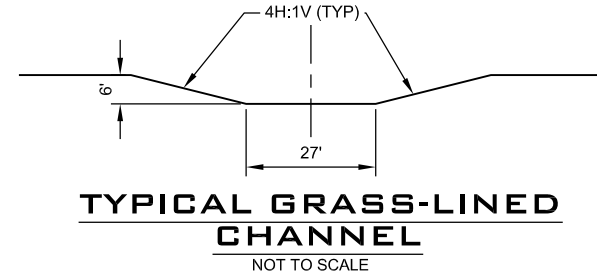
**PROFILE - I-25/EVENTS DRIVE OUTLET SYSTEM**





SEE SHEET 2 OF 4

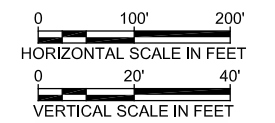
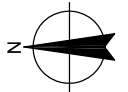
**PLAN**



**PROFILE**

**Legend**

- City Limits
  - Design Point
  - Sanitary Sewers
  - Water
  - Existing Storm Sewer
  - Existing Parcel
  - Existing Storm Manhole
  - Existing Storm Inlet
  - Proposed Storm Sewer
  - Proposed Storm Manhole
  - Existing Contours
  - Proposed Contours
- FIS Flood Zone**
- A, AE, AO
  - 0.2 Percent
  - AE, Floodway

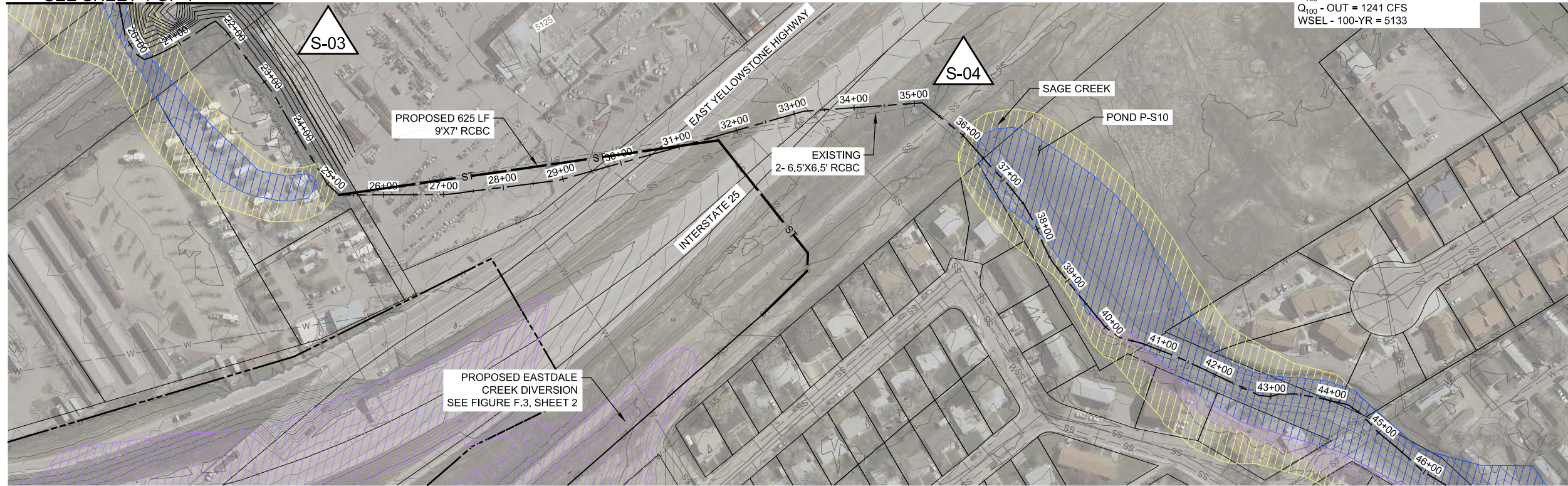


CASPER SWMP PROJECT  
CASPER, WYOMING

**SAGE CREEK  
PROPOSED  
IMPROVEMENTS**

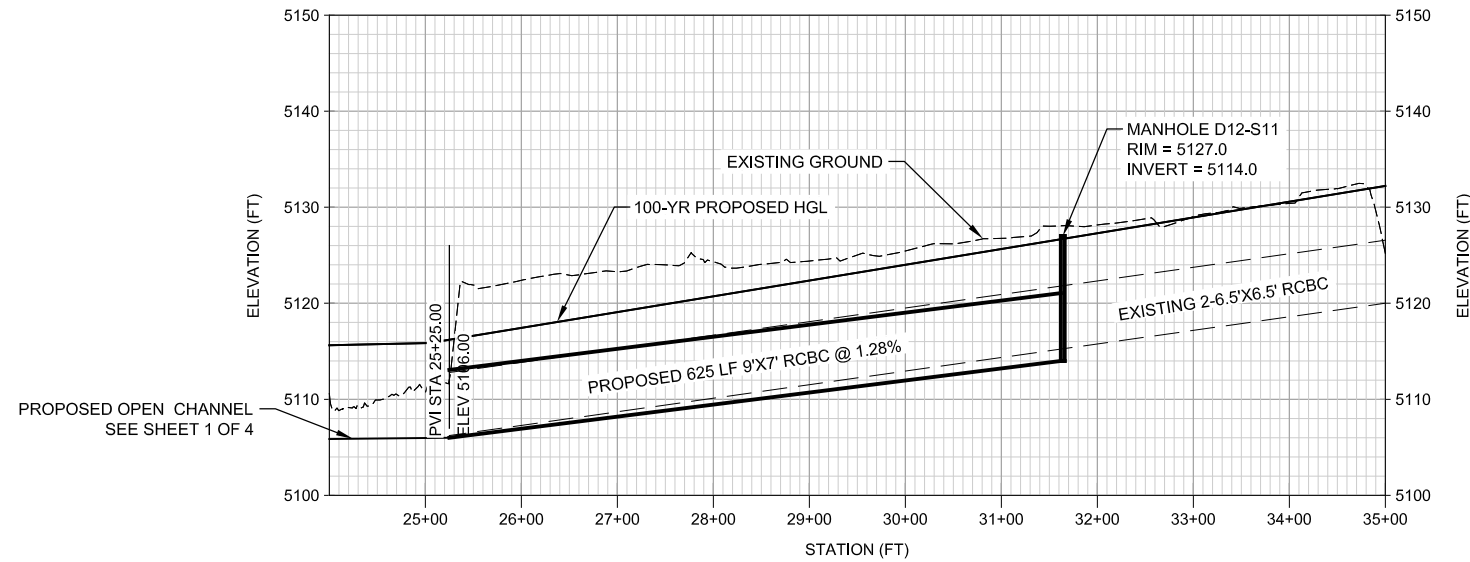


SEE SHEET 1 OF 4



CASPER RAIL TRAIL POND (P-S10)  
 VOLUME - 100-YR = 22 AC-FT  
 $Q_{100} - IN = 2152 \text{ CFS}$   
 $Q_{100} - OUT = 1241 \text{ CFS}$   
 WSEL - 100-YR = 5133

**PLAN**

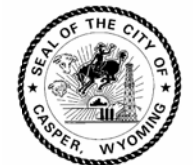
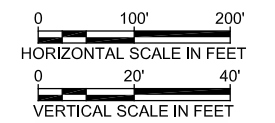


$Q_{DESIGN} = 830 \text{ CFS}$   
 $Q_{100} = 830 \text{ CFS}$

**PROFILE**

**Legend**

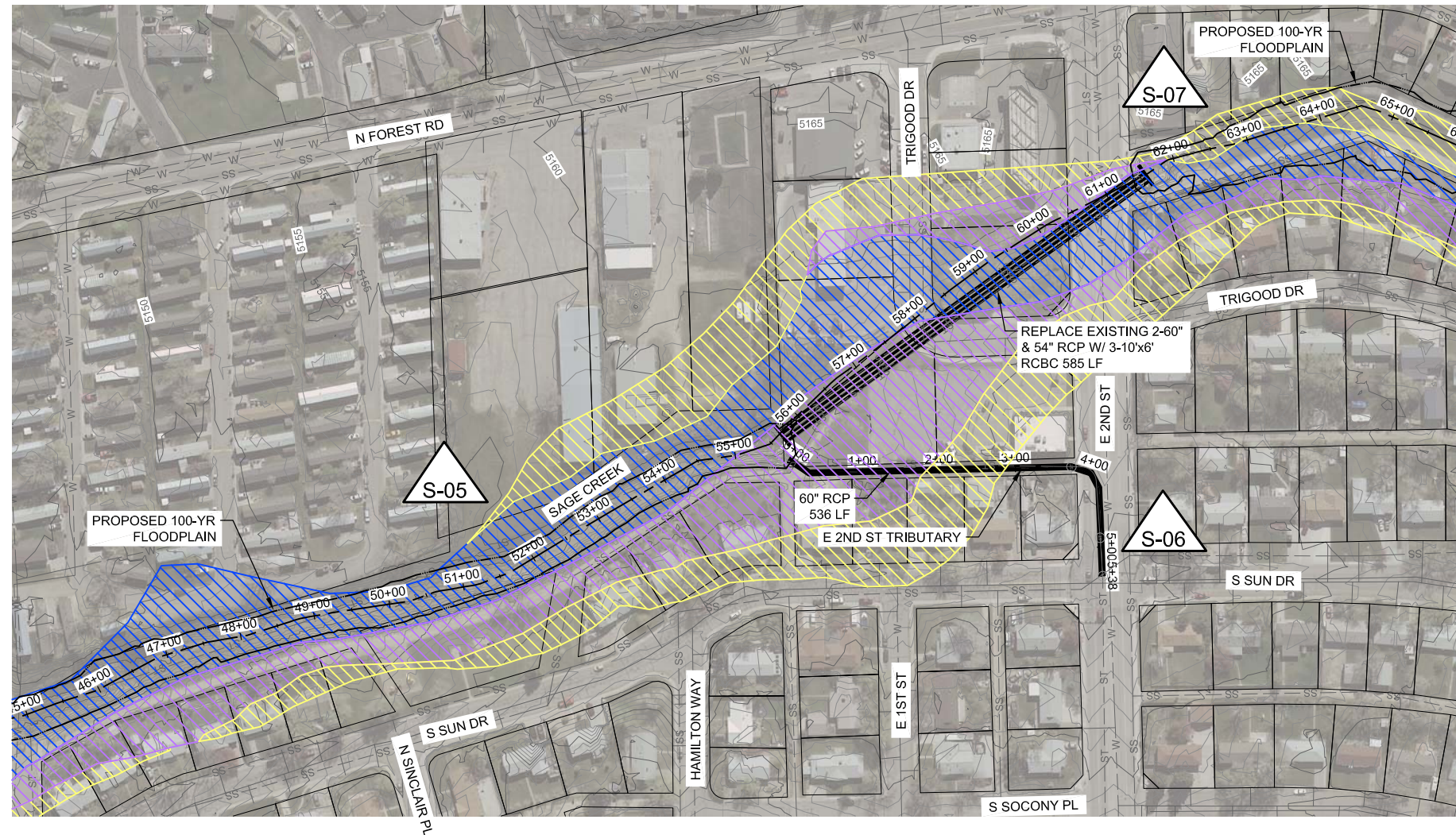
- City Limits
- Design Point
- C-09
- Sanitary Sewers
- Water
- Existing Storm Sewer
- Existing Parcel
- Existing Storm Manhole
- Existing Storm Inlet
- Proposed Storm Sewer
- Proposed Storm Manhole
- Existing Contours
- Proposed Contours
- FIS Flood Zone**
  - A, AE, AO
  - 0.2 Percent
  - AE, Floodway



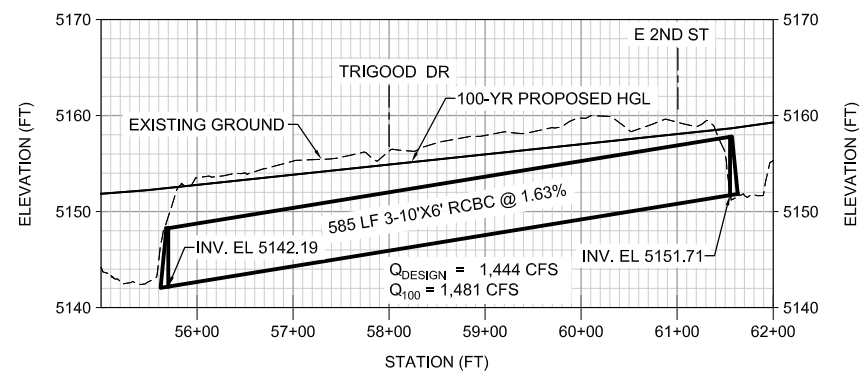
CASPER SWMMP PROJECT  
 CASPER, WYOMING

**SAGE CREEK  
 PROPOSED  
 IMPROVEMENTS**

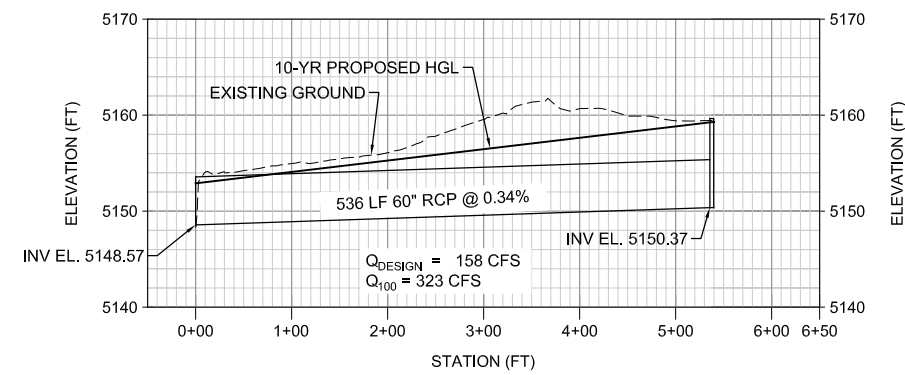




**PLAN**



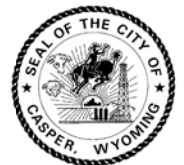
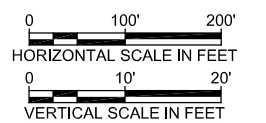
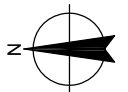
**PROFILE-SAGE CREEK**



**PROFILE-E 2ND STREET TRIBUTARY**

**Legend**

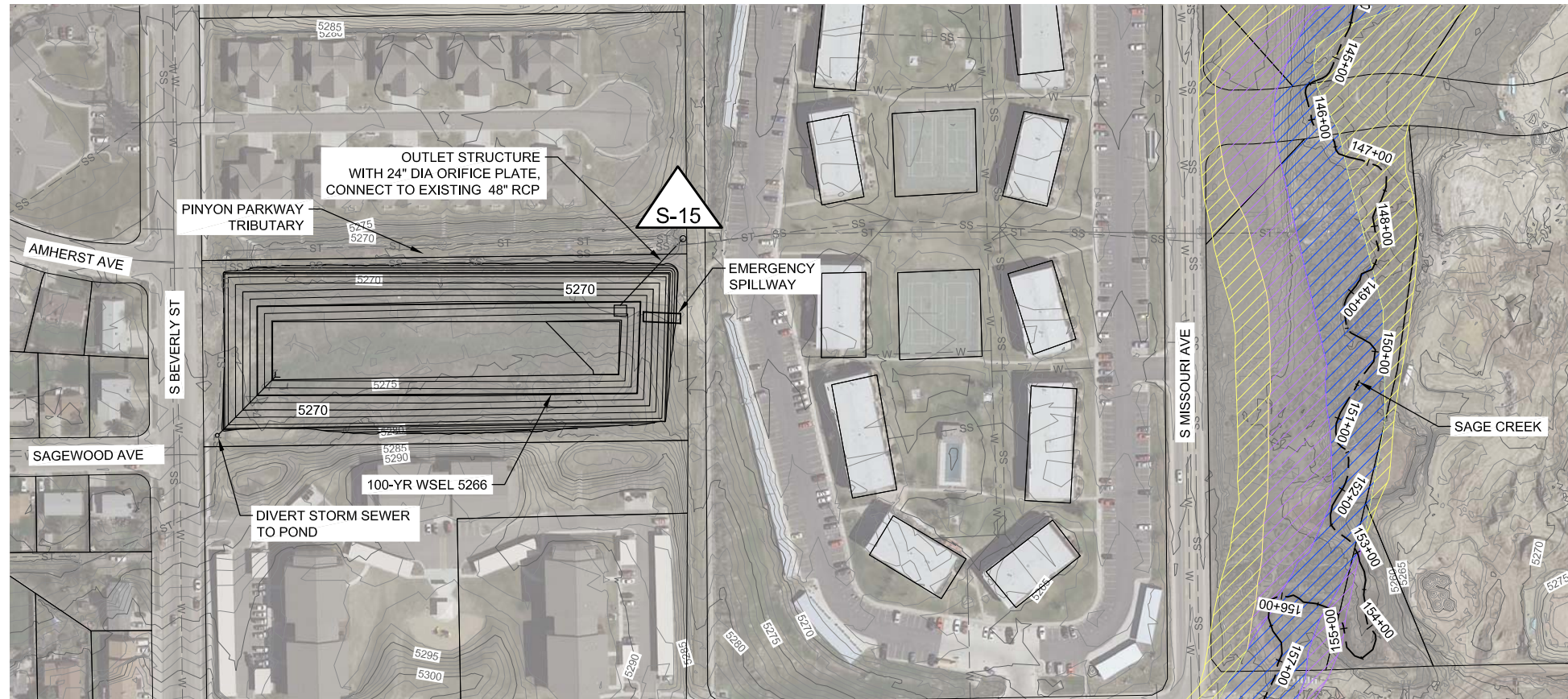
- City Limits
  - Design Point
  - C-09
  - Sanitary Sewers
  - Water
  - Existing Storm Sewer
  - Existing Parcel
  - Existing Storm Manhole
  - Existing Storm Inlet
  - Proposed Storm Sewer
  - Proposed Storm Manhole
  - Existing Contours
  - Proposed Contours
- FIS Flood Zone**
- A, AE, AO
  - 0.2 Percent
  - AE, Floodway



CASPER SWMP PROJECT  
CASPER, WYOMING

**SAGE CREEK  
PROPOSED  
IMPROVEMENTS**

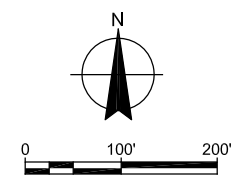




BEVERLY STREET (P-S14) DETENTION  
 VOLUME-100YR=15 AC-FT  
 $Q_{100} IN = 321$  CFS  
 $Q_{100} OUT = 48$  CFS  
 WSEL-100-YR = 5266

**PLAN**

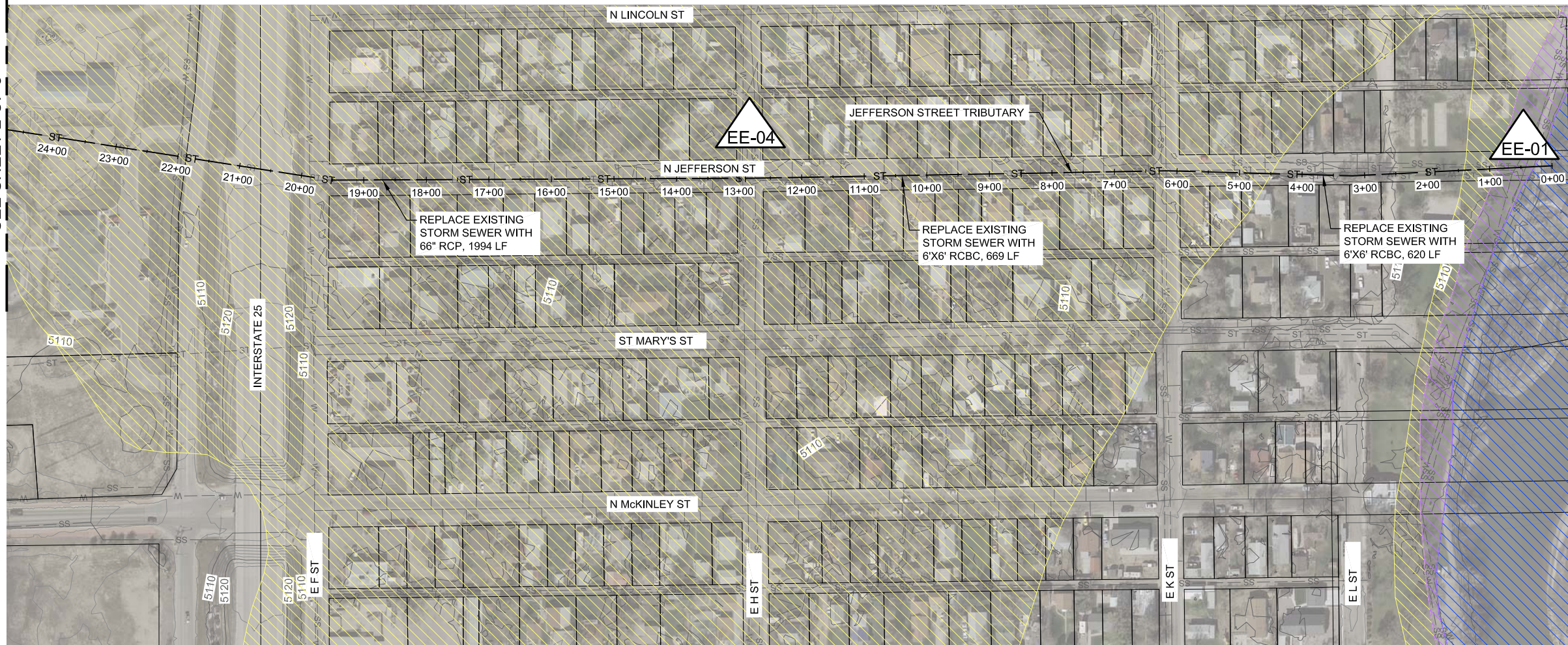
- Legend**
- City Limits
  - Design Point
  - Sanitary Sewers
  - Water
  - Existing Storm Sewer
  - Existing Parcel
  - Existing Storm Manhole
  - Existing Storm Inlet
  - Proposed Storm Sewer
  - Proposed Storm Manhole
  - Existing Contours
  - Proposed Contours
- FIS Flood Zone**
- A, AE, AO
  - 0.2 Percent
  - AE, Floodway



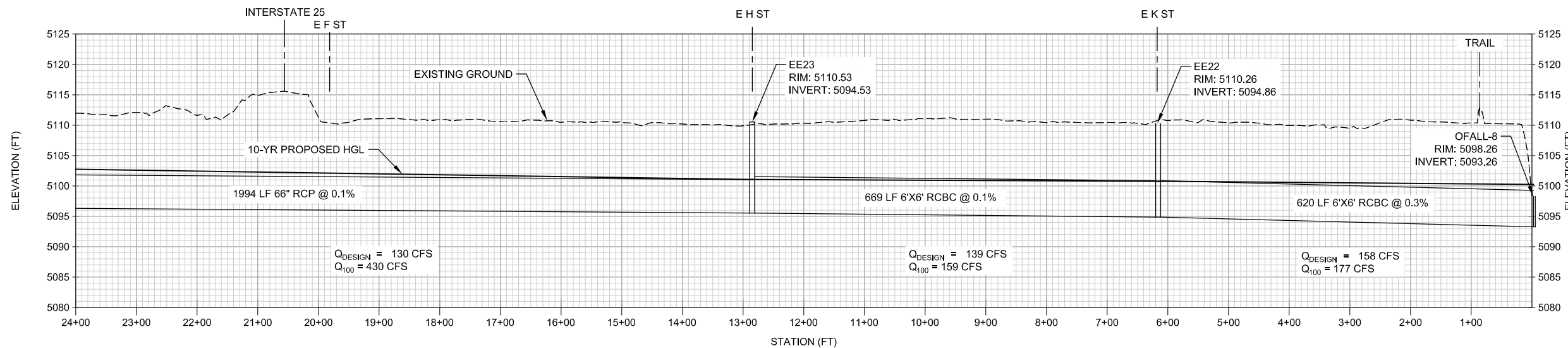
CASPER SWMP PROJECT  
 CASPER, WYOMING

**SAGE CREEK  
 PROPOSED  
 IMPROVEMENTS**





PLAN

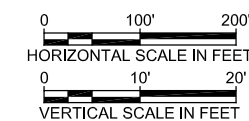


PROFILE - JEFFERSON STREET TRIBUTARY

NOTE: MANHOLE IDS CORRELATE TO STORMCAD ANALYSIS.

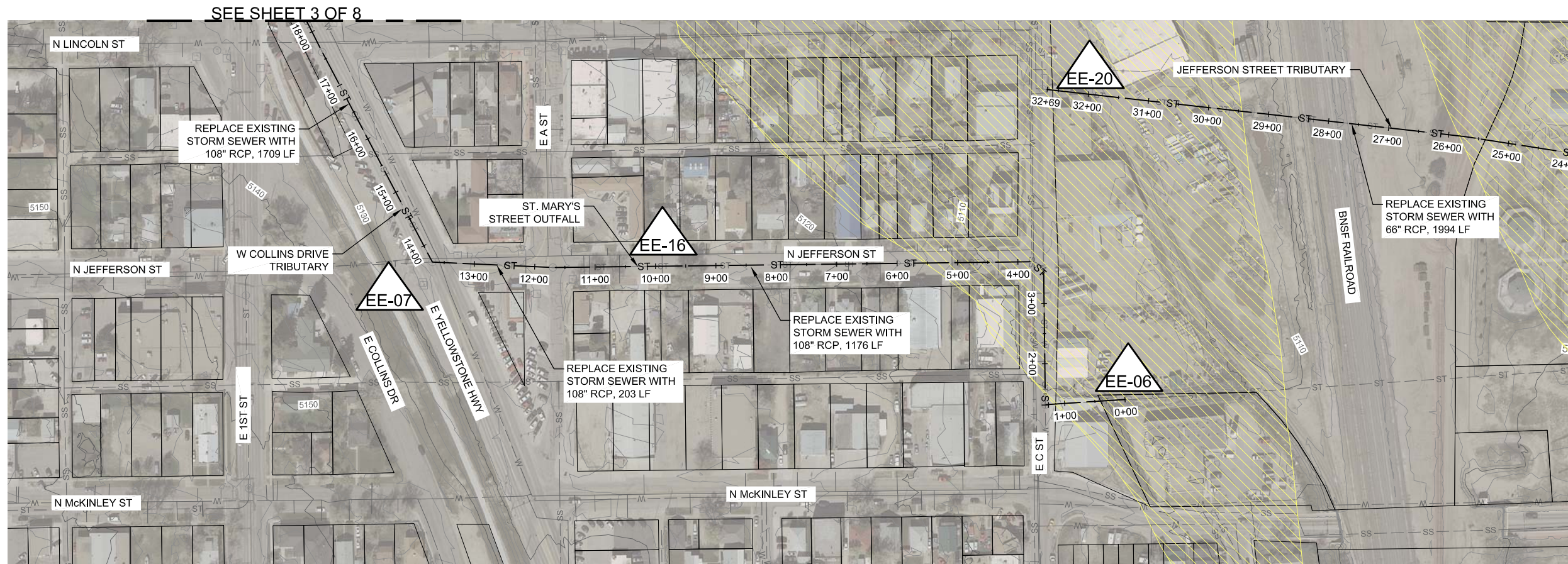
Legend

- City Limits
- Design Point
- C-09
- Sanitary Sewers
- Water
- Existing Storm Sewer
- Existing Parcel
- Existing Storm Manhole
- Existing Storm Inlet
- Proposed Storm Sewer
- Proposed Storm Manhole
- Existing Contours
- Proposed Contours
- FIS Flood Zone**
  - A, AE, AO
  - 0.2 Percent
  - AE, Floodway

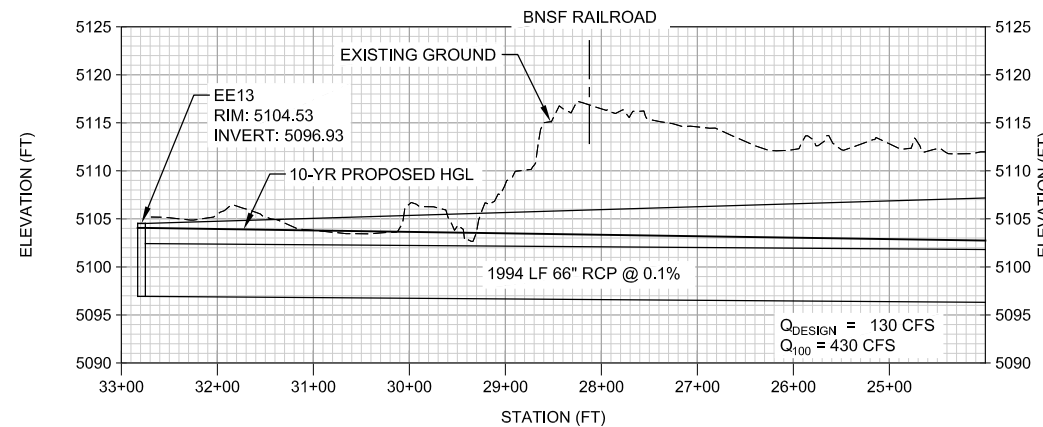


CASPER SWMMP PROJECT  
 CASPER, WYOMING  
**ST. MARY'S STREET  
 OUTFALL  
 PROPOSED  
 IMPROVEMENTS**

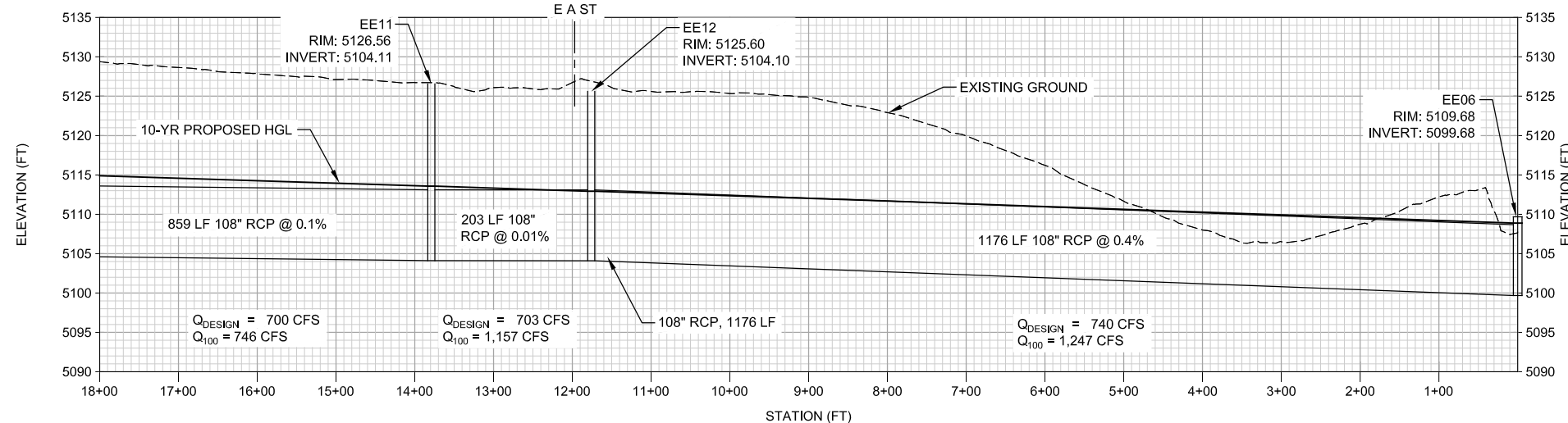




PLAN



PROFILE-JEFFERSON STREET TRIBUTARY

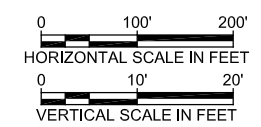
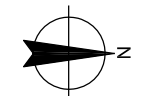


PROFILE-ST. MARY'S STREET OUTFALL AND WEST COLLINS DRIVE TRIBUTARY

NOTE: MANHOLE IDS CORRELATE TO STORMCAD ANALYSIS.

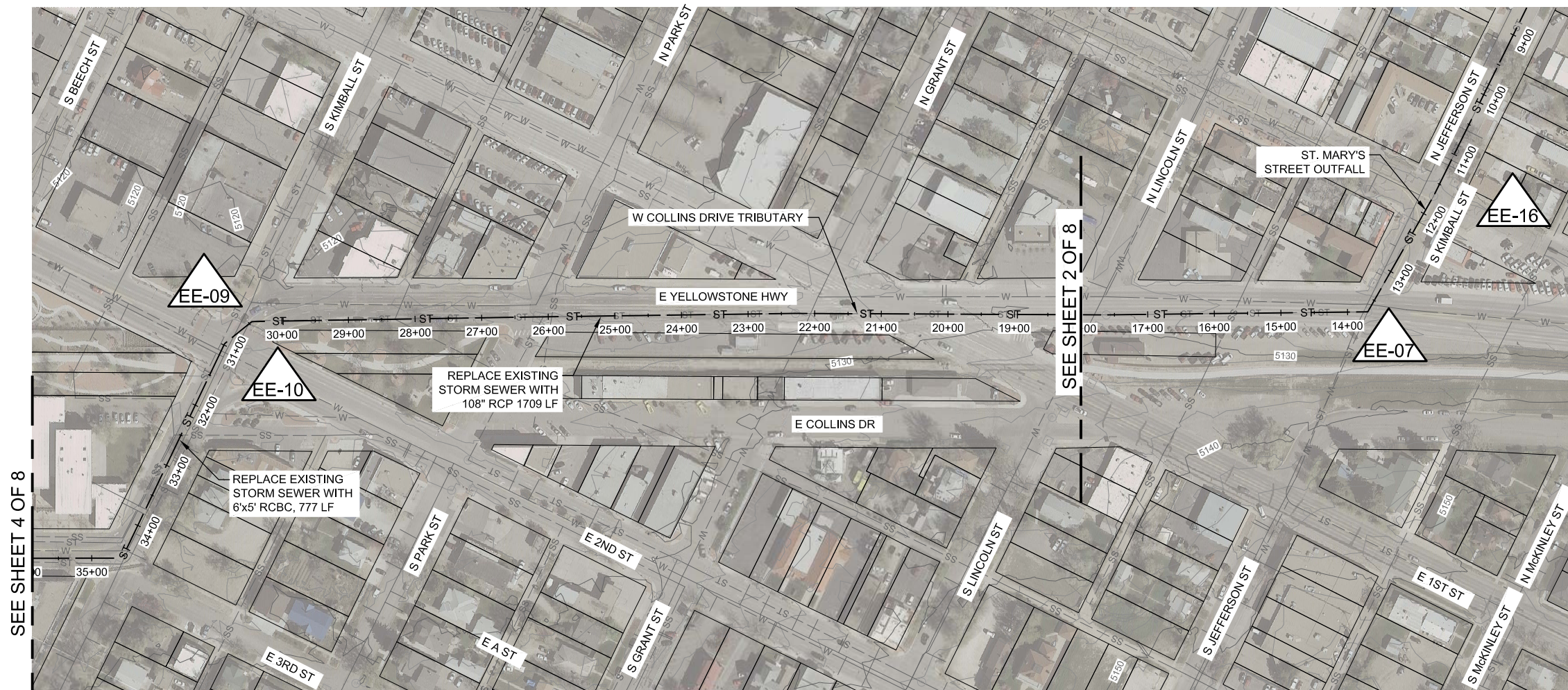
Legend

- City Limits
  - Design Point
  - Sanitary Sewers
  - Water
  - Existing Storm Sewer
  - Existing Parcel
  - Existing Storm Manhole
  - Existing Storm Inlet
  - Proposed Storm Sewer
  - Proposed Storm Manhole
  - Existing Contours
  - Proposed Contours
- FIS Flood Zone
- A, AE, AO
  - 0.2 Percent
  - AE, Floodway

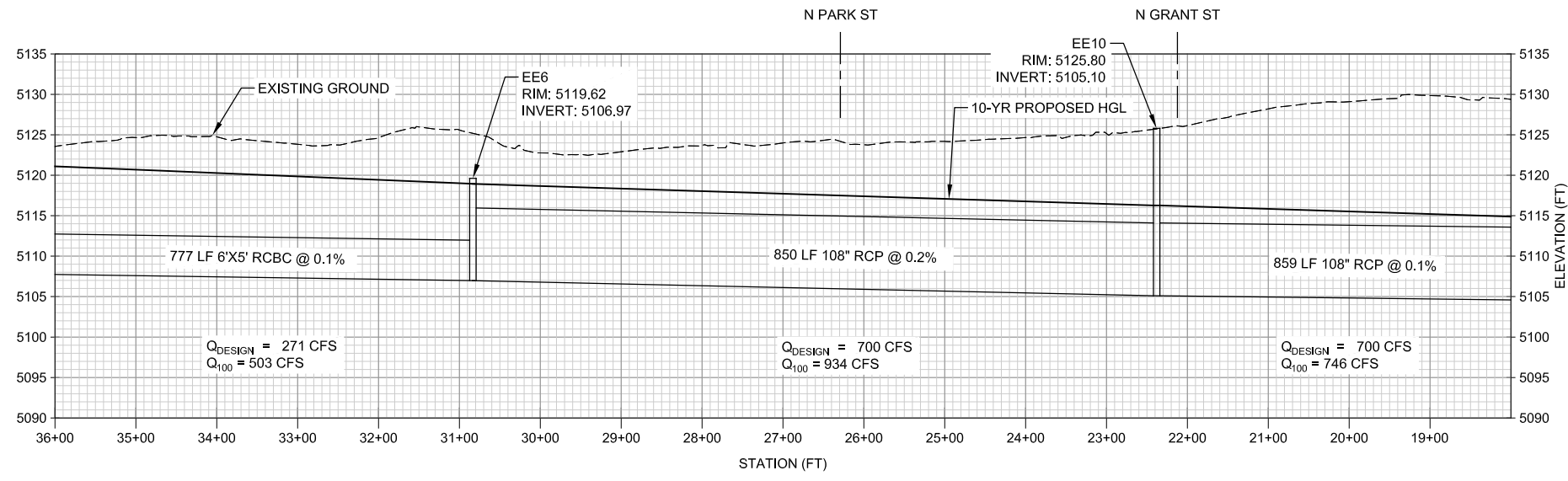


CASPER SWMP PROJECT  
CASPER, WYOMING  
**ST. MARY'S STREET  
OUTFALL  
PROPOSED  
IMPROVEMENTS**





**PLAN**



**PROFILE - ST MARY'S STREET OUTFALL AND WEST COLLINS DRIVE TRIBUTARY**

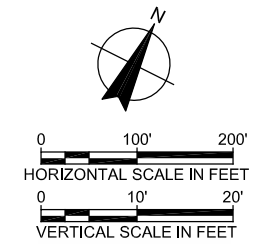
NOTE: MANHOLE IDS CORRELATE TO STORMCAD ANALYSIS.

**Legend**

- City Limits
- Design Point
- Sanitary Sewers
- Water
- Existing Storm Sewer
- Existing Parcel
- Existing Storm Manhole
- Existing Storm Inlet
- Proposed Storm Sewer
- Proposed Storm Manhole
- Existing Contours
- Proposed Contours

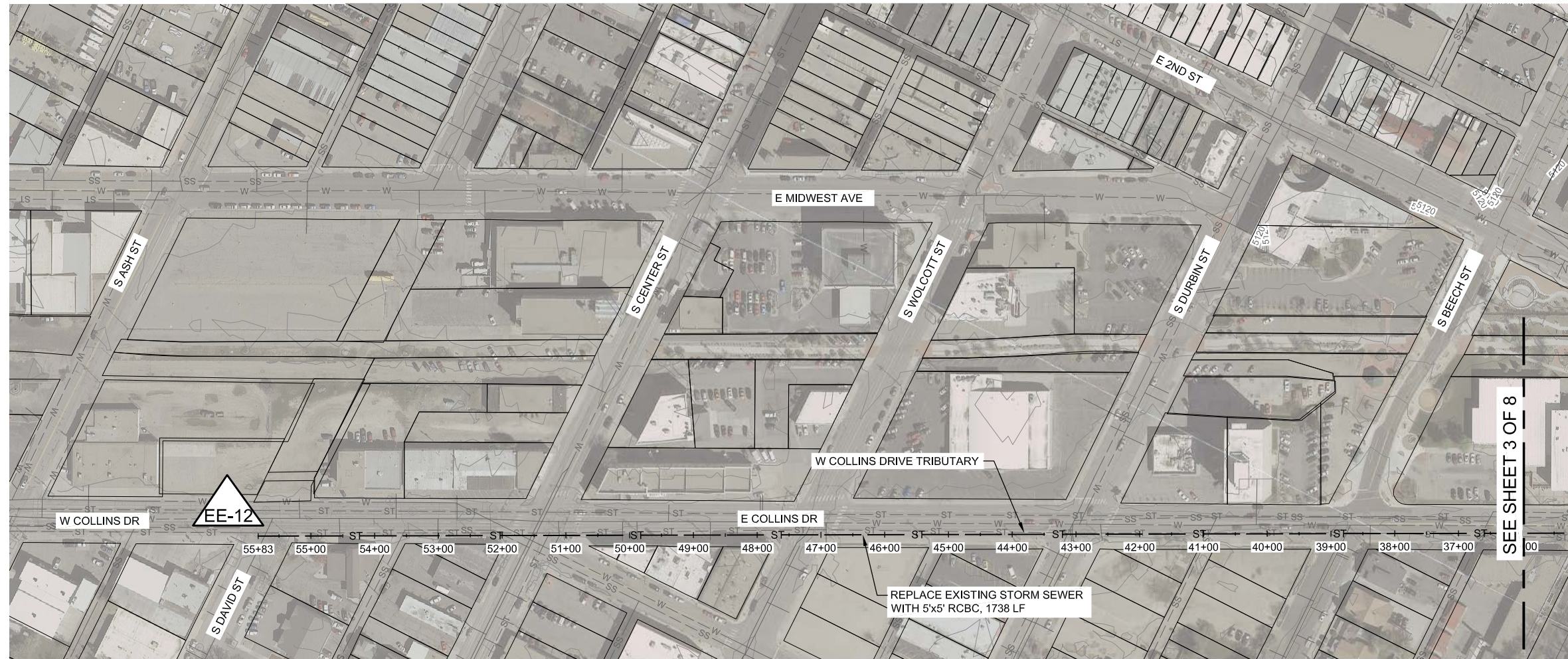
**FIS Flood Zone**

- A, AE, AO
- 0.2 Percent
- AE, Floodway



CASPER SWMP PROJECT  
CASPER, WYOMING  
**ST. MARY'S STREET  
OUTFALL  
PROPOSED  
IMPROVEMENTS**

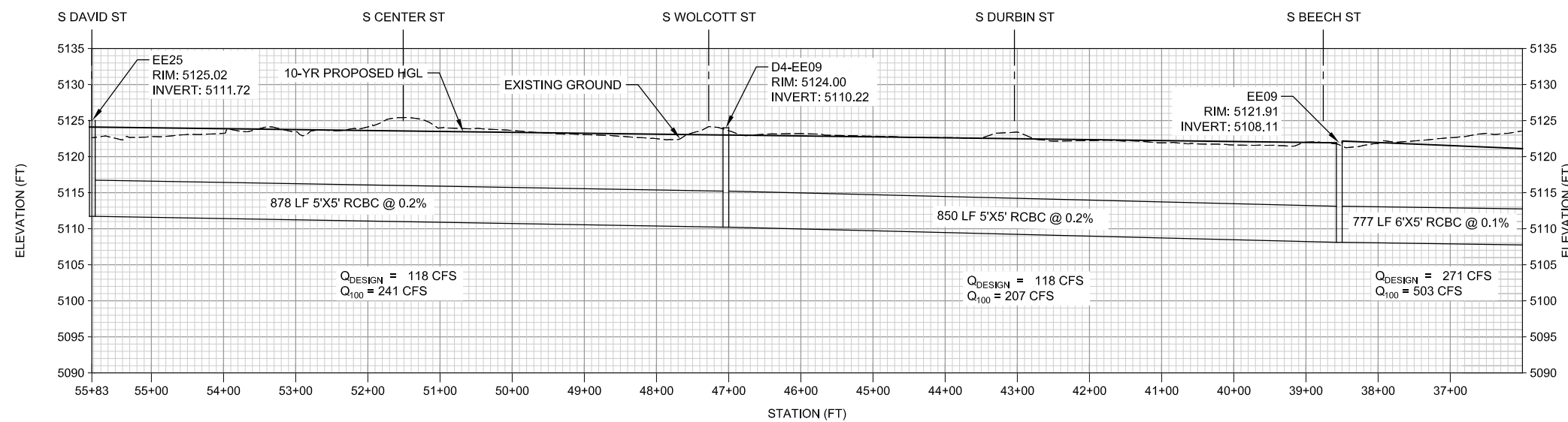
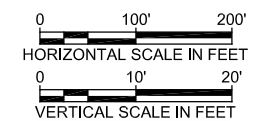




PLAN

Legend

- City Limits
  - Design Point
  - Sanitary Sewers
  - Water
  - Existing Storm Sewer
  - Existing Parcel
  - Existing Storm Manhole
  - Existing Storm Inlet
  - Proposed Storm Sewer
  - Proposed Storm Manhole
  - Existing Contours
  - Proposed Contours
- FIS Flood Zone
- A, AE, AO
  - 0.2 Percent
  - AE, Floodway

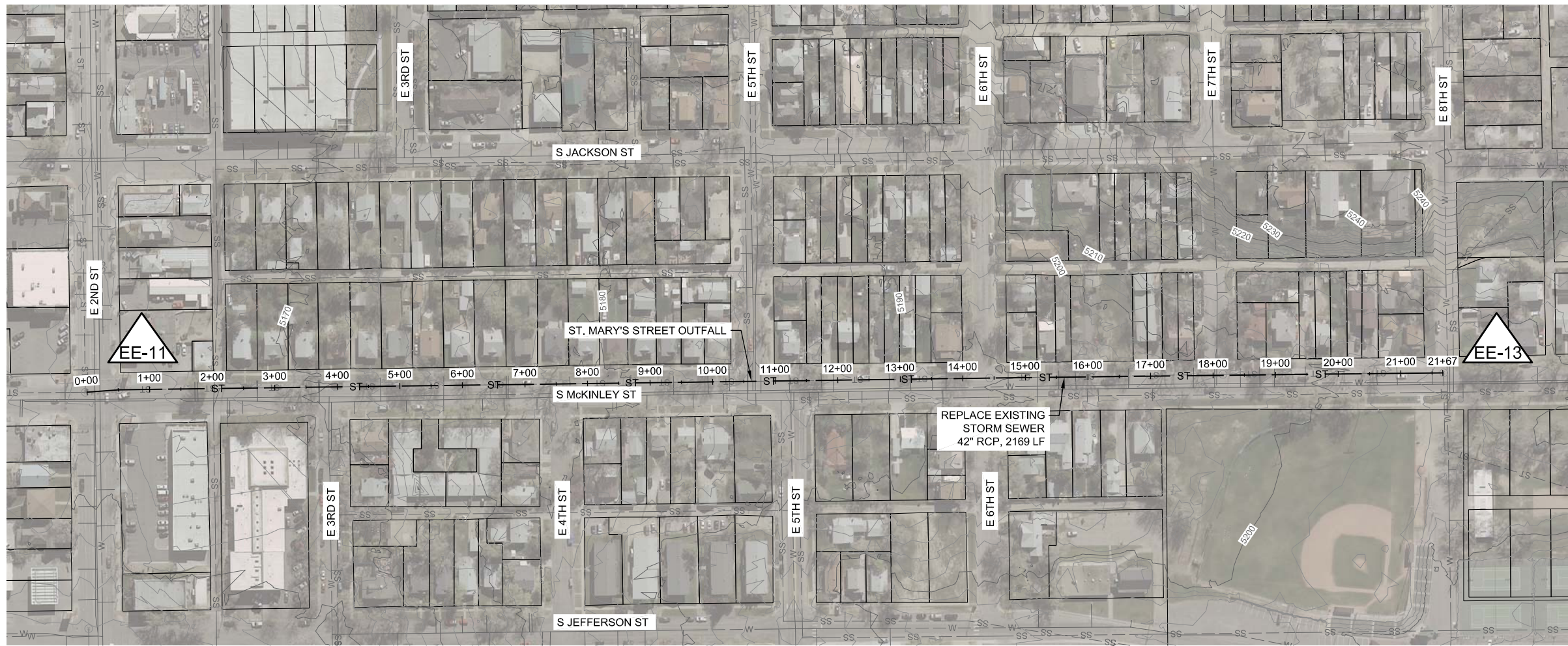


PROFILE - WEST COLLINS DRIVE TRIBUTARY

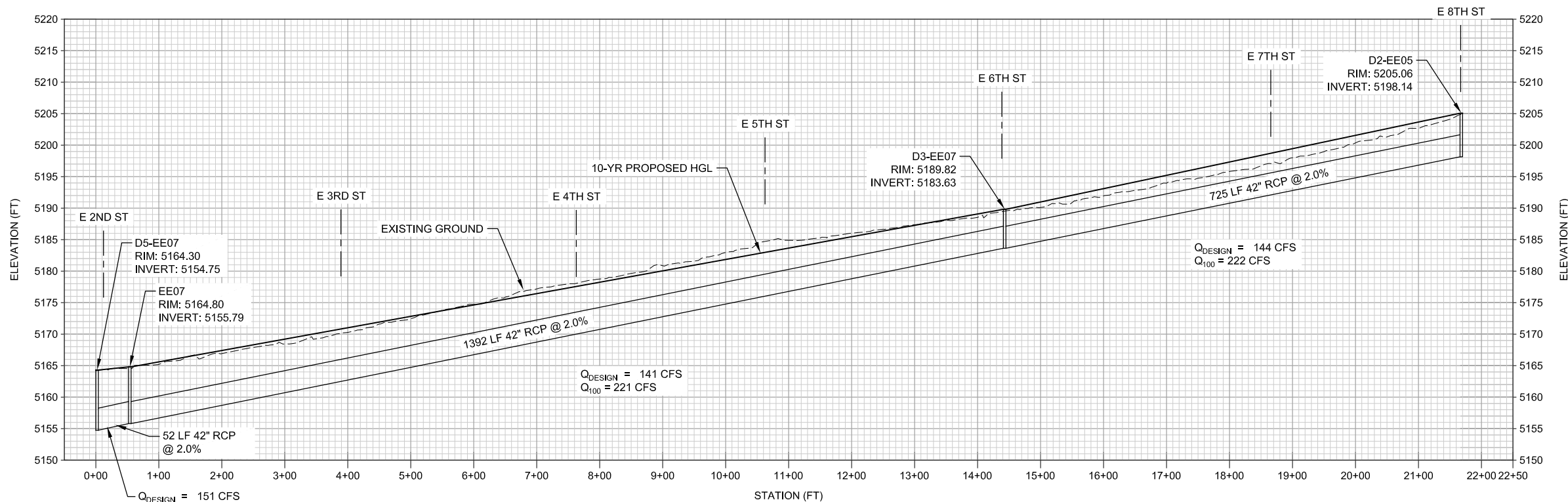
NOTE: MANHOLE IDS CORRELATE TO STORMCAD ANALYSIS.

CASPER SWMMP PROJECT  
 CASPER, WYOMING  
**ST. MARY'S STREET  
 OUTFALL  
 PROPOSED  
 IMPROVEMENTS**



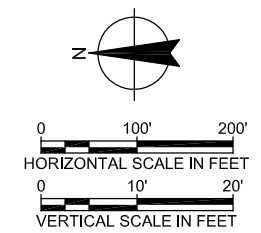


PLAN



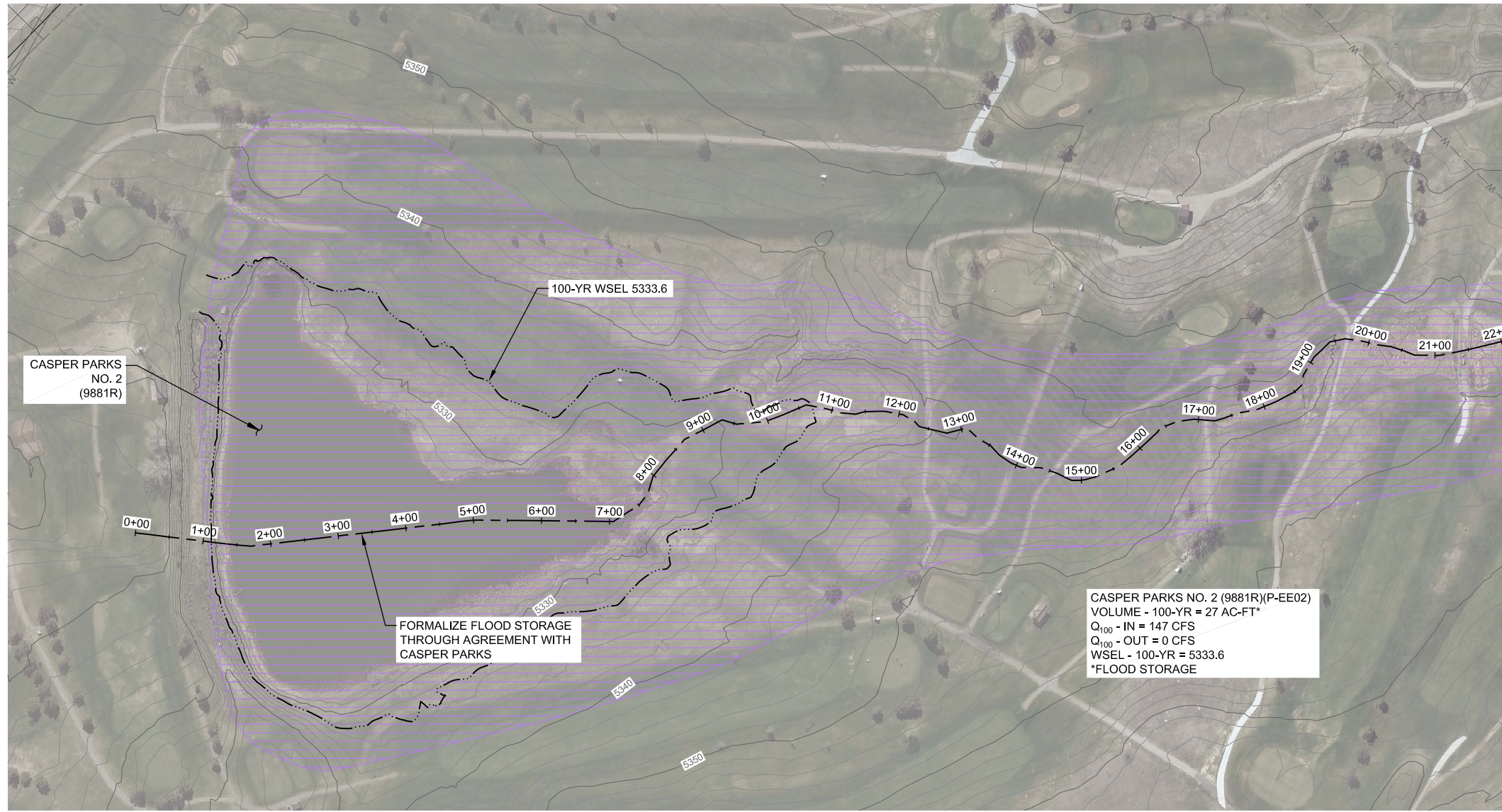
PROFILE

- Legend**
- City Limits
  - Design Point C-09
  - Sanitary Sewers
  - Water
  - Existing Storm Sewer
  - Existing Parcel
  - Existing Storm Manhole
  - Existing Storm Inlet
  - Proposed Storm Sewer
  - Proposed Storm Manhole
  - Existing Contours
  - Proposed Contours
- FIS Flood Zone**
- A, AE, AO
  - 0.2 Percent
  - AE, Floodway

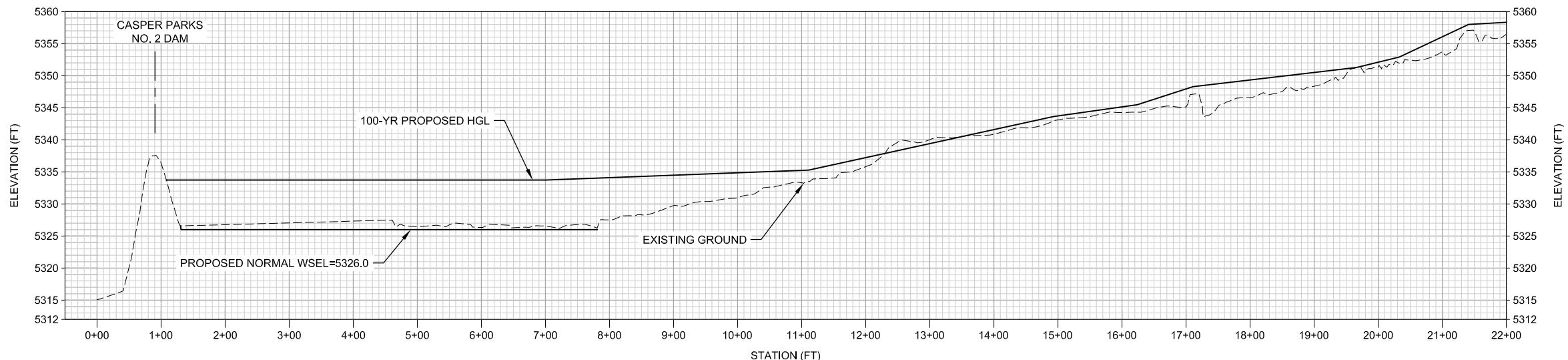


CASPER SWMMP PROJECT  
 CASPER, WYOMING  
**ST. MARY'S STREET  
 OUTFALL  
 PROPOSED  
 IMPROVEMENTS**





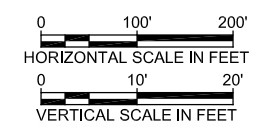
**PLAN**



**PROFILE**

**Legend**

- City Limits
  - Design Point
  - Sanitary Sewers
  - Water
  - Existing Storm Sewer
  - Existing Parcel
  - Existing Storm Manhole
  - Existing Storm Inlet
  - Proposed Storm Sewer
  - Proposed Storm Manhole
  - Existing Contours
  - Proposed Contours
- FIS Flood Zone
- A, AE, AO
  - 0.2 Percent
  - AE, Floodway

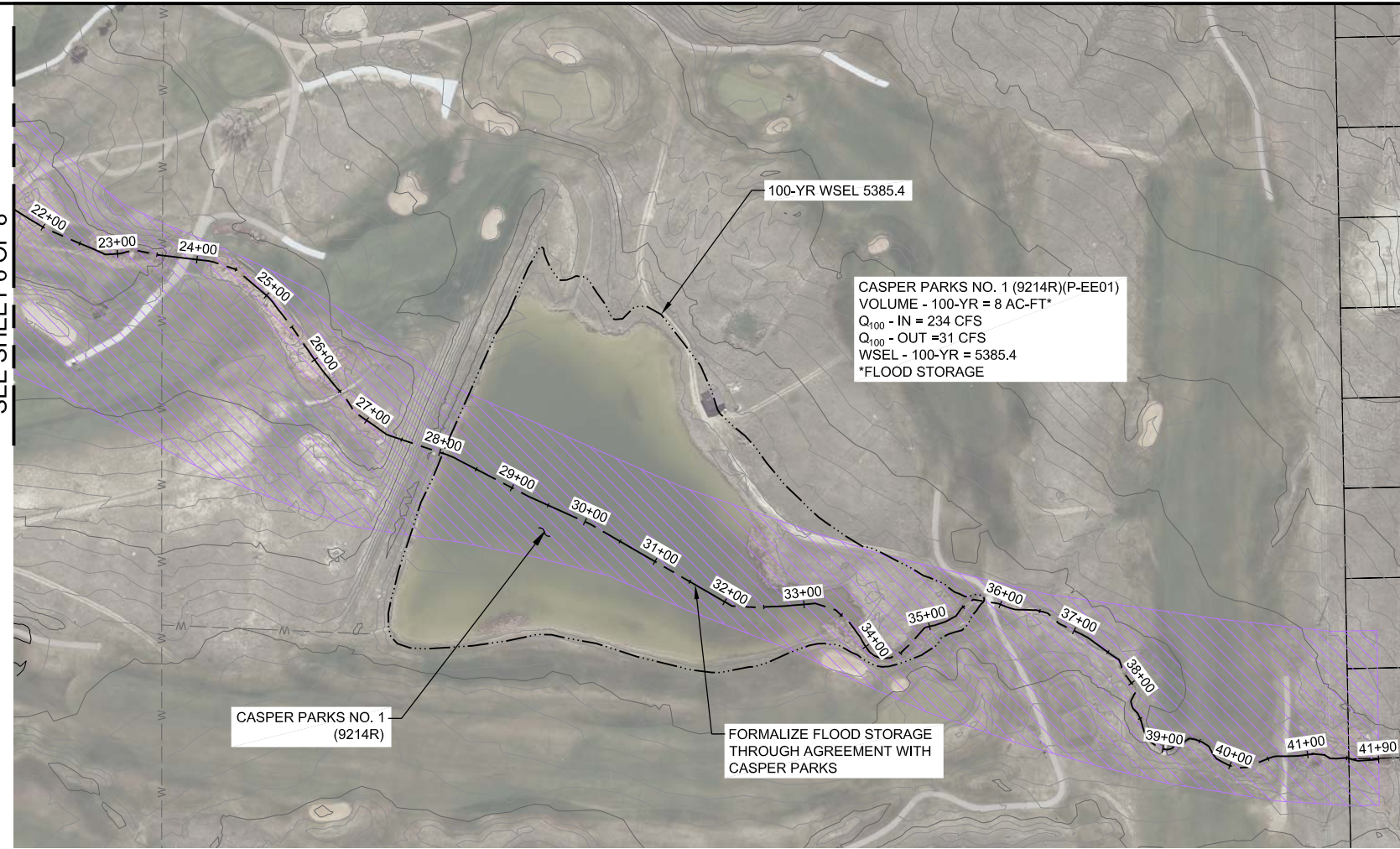


**CASPER SWMP PROJECT**  
**CASPER, WYOMING**  
**ST. MARY'S STREET**  
**OUTFALL**  
**PROPOSED**  
**IMPROVEMENTS**

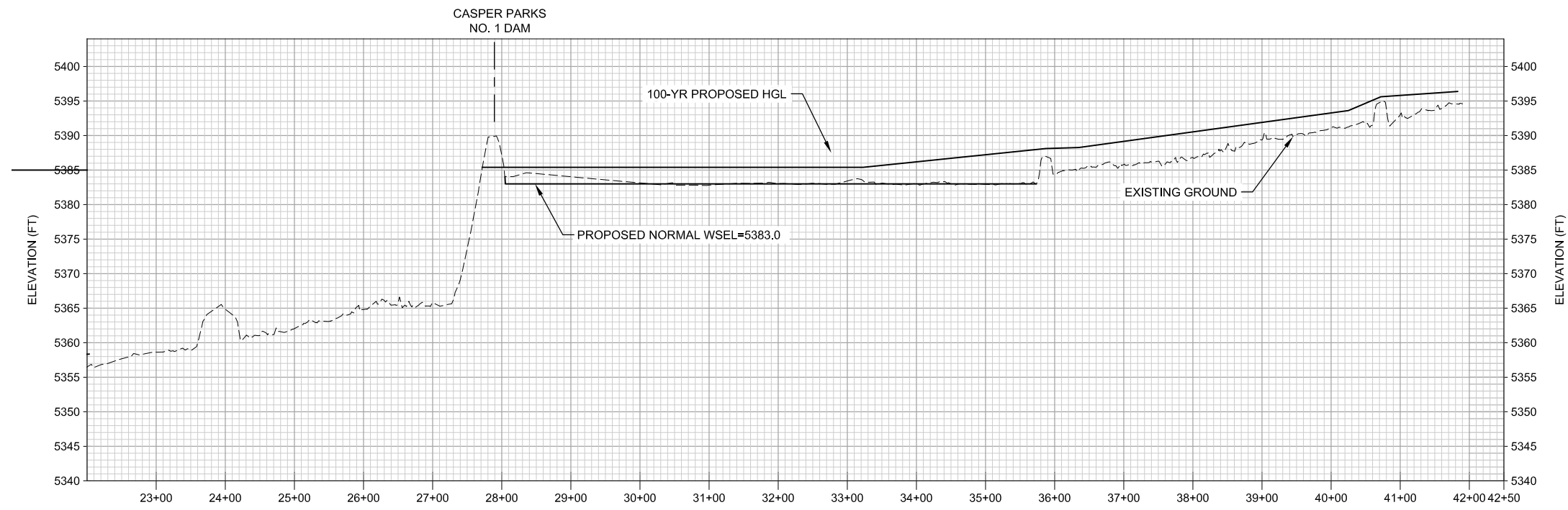
SEE SHEET 7 OF 8



SEE SHEET 6 OF 8



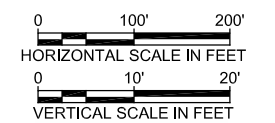
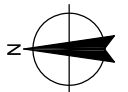
PLAN



PROFILE

Legend

- City Limits
  - Design Point
  - Sanitary Sewers
  - Water
  - Existing Storm Sewer
  - Existing Parcel
  - Existing Storm Manhole
  - Existing Storm Inlet
  - Proposed Storm Sewer
  - Proposed Storm Manhole
  - Existing Contours
  - Proposed Contours
- FIS Flood Zone
- A, AE, AO
  - 0.2 Percent
  - AE, Floodway



CASPER SWMP PROJECT  
 CASPER, WYOMING  
**ST. MARY'S STREET  
 OUTFALL  
 PROPOSED  
 IMPROVEMENTS**

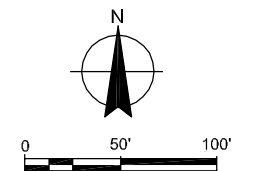




PLAN

Legend

- City Limits
  - Design Point
  - Sanitary Sewers
  - Water
  - Existing Storm Sewer
  - Existing Parcel
  - Existing Storm Manhole
  - Existing Storm Inlet
  - Proposed Storm Sewer
  - Proposed Storm Manhole
  - Existing Contours
  - Proposed Contours
- FIS Flood Zone
- A, AE, AO
  - 0.2 Percent
  - AE, Floodway



CASPER SWMMP PROJECT  
 CASPER, WYOMING  
**ST. MARY'S STREET  
 OUTFALL  
 PROPOSED  
 IMPROVEMENTS**